

# SAE

# A

## 6

## 5

## 4

## 3

## 2

## 1

## 1/2

## 0

## 00

# B

## 6

H=22 1100258\*

H=22 1100081  
H=75 1100019  
H=51 1100159

H=60 1100002  
H=100 1100001  
H=154 1100021  
H=81 1100202

H=117 1100003  
H=49 1100013/01  
H=117 1100015  
H=53 1100128/01  
H=17 1100149

H=43 1100197  
H=53 1100052  
H=67 1100053/01  
H=47,5 1100112/02  
H=106 1100235

H=158 1100014/04  
H=47,5 100108/02

## 5

H=23 1100206

H=47,5 1100111  
H=22 1100141  
H=96 1100104

H=47,5 1100113  
H=22 1100140  
H=154 1100021/01  
H=100 1100001/01  
H=60 1100002/01

H=49 1100013/02  
H=117 1100015/08  
H=47,5 1100117  
H=22 1100139  
H=67 1100172

H=47,5 1100112/01  
H=22 1100135  
H=67 1100053  
H=50 1100243

H=158 1100014/05  
H=47,5 1100108/01  
H=22 1100134

## 4

H=60 1100002/11  
H=22 1100167

H=60 1100002/06  
H=22 1100205  
H=100 1100001/09

H=60 1100024  
H=25 1100114  
H=154 1100164  
H=74 1100175  
H=70 1100200  
H=40 1100232

H=49 1100013  
H=117 1100015/01  
H=20 1100270

H=47,5 1100112/03  
H=43 1100197/01  
H=67 1100053/02  
H=55 1100225

H=158 1100014/02  
H=47,5 1100108/03

## 3

H=47,5 1100116  
H=117 1100015/17  
H=22 1100138

H=47,5 1100115  
H=22 1100137  
H=49 1100013/03  
H=117 1100015/13

H=95 1100020  
H=117 1100032  
H=47,5 1100084  
H=22 1100136

H=117 1100032/03  
H=47,5 1100112  
H=56 1100129  
H=53 1100131  
H=22 1100133  
H=67 1100254/01

H=158 1100014/01  
H=47,5 1100108  
H=67 1100123  
H=22 1100132  
H=80 1100142

## 2

H=95 1100020/03  
H=117 1100032/01  
H=67 1100254

H=117 1100032/02

H=158 1100014  
H=67 1100194  
H=80 1100142/02  
H=135 1100263

H=190 1100072

H=242 1100075\*

## 1

H=80 1100036  
H=67 1100049/01

H=80 1100037  
H=67 1100049  
H=158 1100025

H=158 1100027  
H=67 1100047  
H=47,5 1100083  
H=135 1100109  
H=140 1100125

H=190 1100067

H=120 1100092\*  
H=298 1100060\*  
H=242 1100062\*

H=298 1100065\*  
H=242 1100066\*

## 1/2

H=190 1100219

H=122 1100217\*

## 0

H=242 1100070\*  
H=298 1100071\*

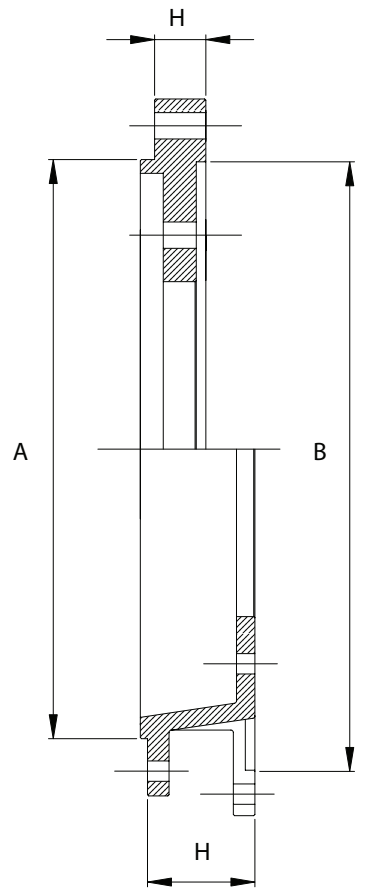
H=196 1100218\*  
H=120 1100093\*  
H=298 1100059\*  
H=242 1100061\*  
H=125 1100209\*  
H=175 1100259\*

H=298 1100063\*  
H=242 1100064\*  
H=270 1100234\*

## 00

H=242 1100068\*  
H=278 1100069\*  
H=210 1100257\*

H=190 1100252\*  
H=200 1100213\*



\* Carpenteria - Carpentry - Charpenterie - Zimmereiarbeiten - Carpintería